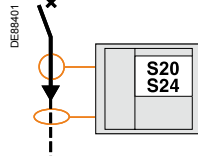


Feeder protection

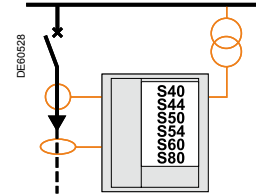
- feeder short-circuit and overload protection.

Protection of low-capacitance feeders in impedance earthed or solidly earthed neutral systems: Sepam S20, S24, S40, S44, S50, S54, S60 or S80

- no voltage and frequency monitoring.

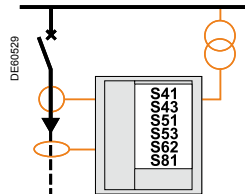


- voltage and frequency monitoring.



Protection of high-capacitance feeders in impedance earthed or compensated or isolated neutral systems: Sepam S41, S43, S51, S53, S62 or S81

- specific feeder protection: 67N/67NC.



Substation applications

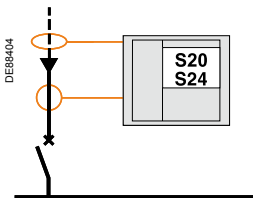
Incomer protection

Incomer protection

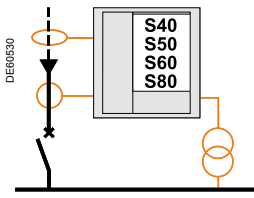
- busbar short-circuit protection.

Incomer protection: Sepam S20, S24, S40, S50, S60 or S80

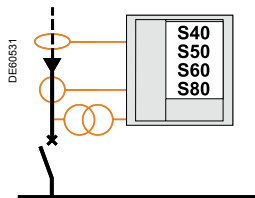
- no voltage and frequency monitoring.



- busbar voltage and frequency monitoring.

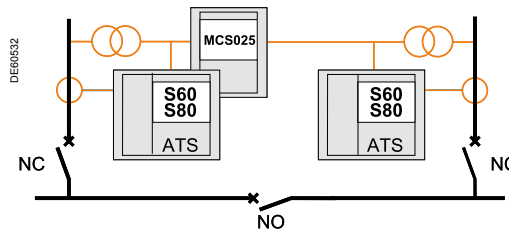


- line voltage and frequency monitoring.



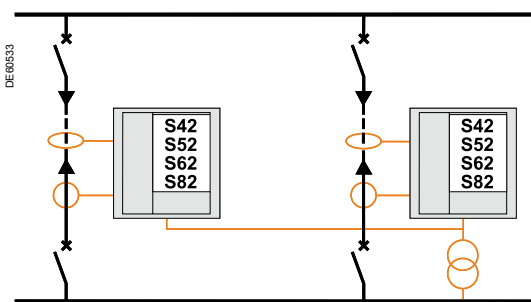
Protection of 2 incomers: Sepam S60 or S80

- with automatic source transfer (ATS) and synchro-check (ANSI 25).



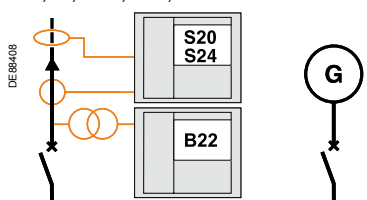
Parallel incomer protection: Sepam S42, S52, S62 or S82

- specific line or source protection: 67, 67N/67NC.

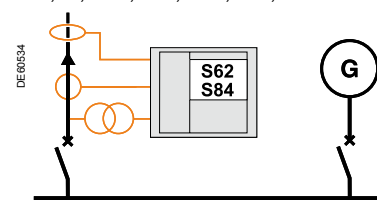


Parallel-incomer protection with disconnection function: Sepam S20 + B22, S62 or Sepam S84

- disconnection-specific functions: 27, 59, 59N, 81L, 81R.

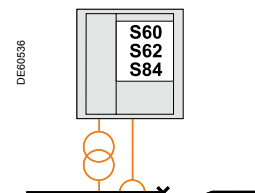
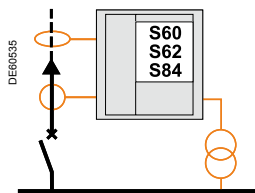


- disconnection-specific functions: 27, 59, 59N, 81L, 81R, 32P, 37P.



Protection of an incomer or coupling circuit breaker with load shedding based on frequency variations: Sepam S60, S62 or S84

- load-shedding-specific functions: 81L, 81R.



Ring-incomer protection: Sepam S42, S52, S62 or S82

- line or source protection: 67, 67N/67NC
- directional logic discrimination.

